

**Christian Doppler  
Laboratory**

**Contact Us**

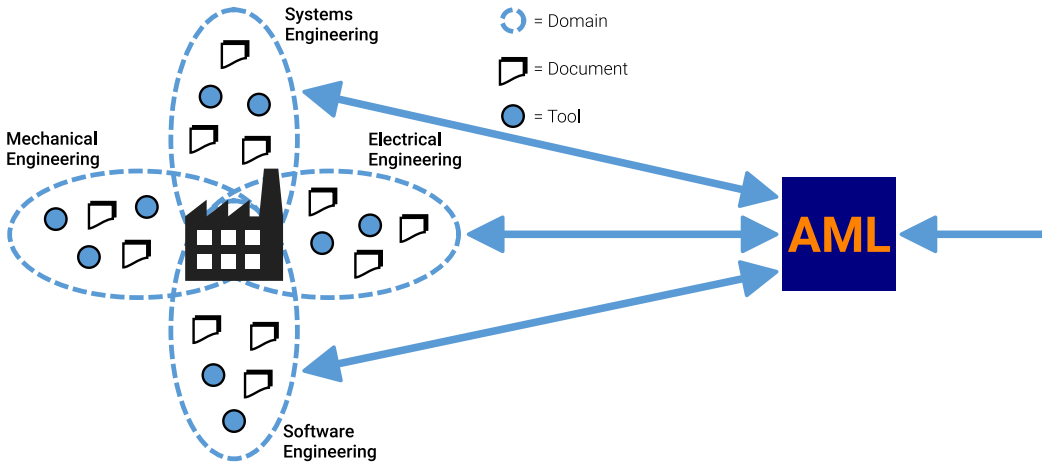
+43-732-2468-4241  
cdl-mint@se.jku.at

# **Model-Integrated Smart Production**

*AutomationML  
Engineer*

**CDL-MINT**

- Integration of Multiple Model-Types
- Simple and Intuitive Usability
- Extendible, Customizable
- Available



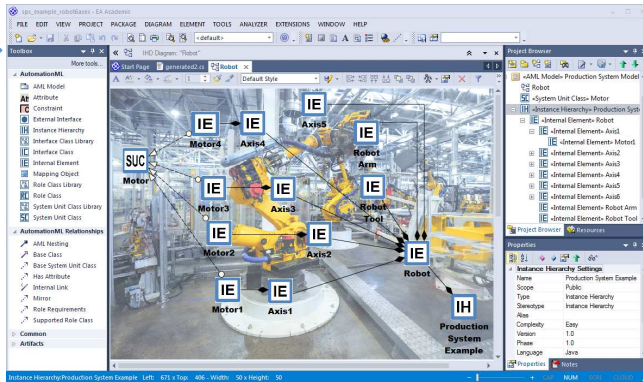
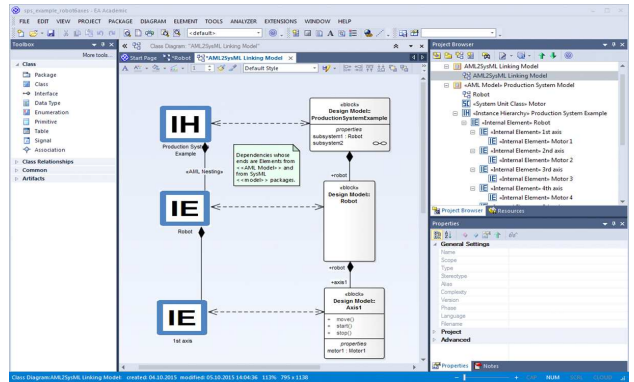
## AutomationML Engineer for EA

AutomationML (AML) is a data format for the exchange of **information from multiple engineering disciplines**. Based on our **AML Engineer** plugin, this format is integrated into the versatile modeling environment of Enterprise Architect (EA). Now it is much easier to accomplish **seamless linking** of engineering information collected in AML with modeling techniques of other disciplines such as software and systems engineering.

Existing functions of Enterprise Architect can be applied to AML models, such as:

- Code Generation
- Model Versioning
- Model Comparison
- Model Simulation
- Collaborative Modeling
- Multi-Viewpoint Modeling
- Adaptive Diagrams
- Report Generation
- Model Auditing
- Model Validation on different levels

Modeling AutomationML information in Enterprise Architect. Here, we showcase the **linking of AML entities (left) with SysML blocks (right)** using UML dependencies. With that, we enable cross-discipline engineering through Enterprise Architect.



This robot of a work cell is one **internal element** of an instance hierarchy (bottom right). It contains sub-components representing axes, which in turn contain motors that correspond to a well defined **system unit class**.

AutomationML Engineer is a Plugin for Enterprise Architect. For any inquiries, please contact LieberLieber Software GmbH: <https://www.lieberlieber.com/>



**Contact**

Univ.-Prof. Dr. Manuel Wimmer  
manuel.wimmer@jku.at

Peter Lieber, LieberLieber  
peter.lieber@lieberlieber.com

## Visit Us

<https://cdl-mint.se.jku.at>



JKU Linz

Institute of Business Informatics – Software Engineering

CDL-MINT

Altenberger Straße 69, Science Park 3

4040 Linz

Austria

- High Assurance CPS Engineering
- Model-Based Data Analytics
- Digital Twin Engineering
- Continuous DevOps

## Industrial Partners



 Federal Ministry  
Digital and  
Economic Affairs

CERTICON



LieberLieber 